

you are in: [HOME](#) » [AUDIO VISUAL](#) » MEDIA ROOMS IN BASEMENT CONVERSIONS

G+1 19

Pin it 1K+

Media Rooms in Basement Conversions



Offering a fun, relaxing space that the whole family can enjoy, basement media rooms are definitely on the up, so to speak.

We ask Rosie Caley of basement design specialist Basement Works and [The Oxford and London Building Company](#) what goes into creating the perfect underground basement media room.

The past few years have seen a growing trend for basement conversions, with some of the more exuberant examples including subterranean tennis courts and swimming pools. But Rosie Caley, whose company [Basement Works](#) specialises in creating [basement extensions](#), says basement media rooms are now one of the most popular choices, especially for families living in London where space to develop above ground is most limited.



'The cost of fitting out basement media rooms is much less nowadays, as the technology has come on in leaps and bounds, and much less is required for a fully functioning audio visual system that you can control from your iPhone or iPad,' says Rosie.

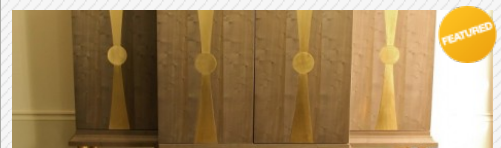
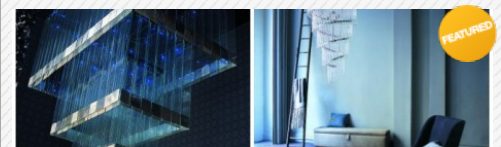
Thanks to less intrusive technology, racks of expensive equipment requiring lots of space and ventilation are now largely a thing of the past.

A few years ago, many clients were asking for traditional [home cinemas](#) to feature in their basement conversion plans, but Rosie says modern media rooms have become far more sophisticated and multifunctional. 'They can double up as basement games rooms, kids' playrooms, music rooms –

FOLLOW US



FEATURED POSTS

[A Truly Bespoke Home in Highgate](#)[Into The Light](#)[The Sofa & Chair Company Buttons Up For 2014](#)[Hartmann Designs, London Duplex Penthouse](#)[Made to Measure](#)[Ochre, Discreet Glamour and Calm Craftmanship](#)

FEATURED DESIGNER

anything the client can think of.'

So what kind of technology is involved?

'High quality TV screens are now so large and relatively inexpensive that most clients opt for these over a traditional projector and screen system,' says Rosie. 'This keeps the ceiling clear of equipment, and TV screens are also more visible in daylight. Sonos is a popular iPhone-controlled music system that allows you to store all your music on your home computer. Similar systems for storing and streaming films, photos and other media are also available.'



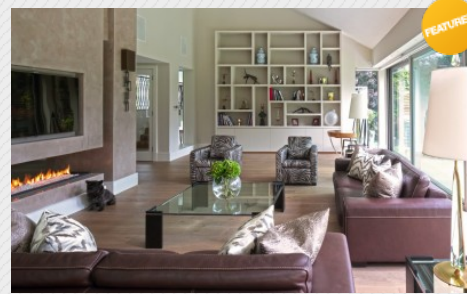
These developments mean clients and designers can be much more creative with the way basement **media rooms** look and function.

Says Rosie: 'We can answer any design brief for a basement conversion but the most common requests are for a large modern family room with elegant decor and low-profile AV gear, speakers in the ceiling, recessed TVs and hidden equipment.'

'We always try to achieve good levels of natural light by using lightwells wherever possible. Natural light gives a much wider range of use to this large room, rather than being confined to a permanently dark cinema room.'



But Rosie would advise against using electric lighting products that are designed to mimic natural light.



DK INTERIORS

dk INTERIORS is a London-based practice with a reputation for interiors that are stylish and glamorous but also understated.

[MORE »](#)



LATEST INSPIRATION

- WE ARE BESPOKE
- HOME PRODUCTS
- BATHROOMS
- KITCHENS
- INTERIOR DESIGN
- LIGHTING DESIGN
- HOMES SHOWCASE
- EXTENSION IDEAS
- LUXURY INTERIOR DESIGNERS
- LUXURY LIVING
- INTERIOR DESIGNERS LONDON
- FIND INTERIOR DESIGNERS

MEET OUR WRITERS



KATE BURNETT

One of the sectors most established journalists. Founder of Studio, an online weekly publication for professionals working in high-end residential design.



ALEX MANSON-SMITH

Copywriter and journalist Alex Manson-Smith has written for most major broadsheets, as well as Grazia and ELLE. Her corporate clients include Google and Thomson.



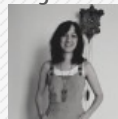
KATIE TREGGIDEN

Katie is the author of the award-winning blog, Confessions Of A Design Geek. She also writes for Design Milk, We Heart, London Design Guide and Ideal Home.



STACEY SHEPPARD

Stacey is the creator of the Interior Design Blog, The Design Sheppard. She has written for a number of design publications including Designer Kitchen & Bathroom Magazine.



BECKY HOH

Rebecca Hoh is a freelance interior design journalist. Former assistant editor on idfx she also writes for The Schemer as well as running her own design-led events.

JAMIE MITCHELL

Jamie Mitchell writes about design, architecture and interiors. He is assistant editor of FX magazine and has

'In my experience these products are just not convincing in a basement and in fact accentuate the sense of being below ground. Flush glass skylights, however, are a great way of bringing in light to a basement media room under the garden.'

Unsurprisingly, most of Basement Works' clients are London families who are desperate for more space but don't want to give up the home and location they love. Interestingly Rosie says this kind of project is best suited to London's traditional Georgian, Victorian and Edwardian houses, as they typically have suspended timber floors, which can easily be excavated from underneath. More recently-built properties tend to have concrete floors, which need to be either removed and replaced or re-enforced in order to create a basement underneath them.



Being underground and out of sight means this kind of conversion has a good chance of being granted planning consent. 'If the building is not listed, it is generally just the size, shape and location of the basement lightwell that will be affected by planning rules, and these can vary from borough to borough, and even street to street.

A listed building is a special case for a basement extension, and we advise people to talk to our sister company, [The Oxford & London Building Consultancy](#) as we have years of experience in dealing with these more complex listed building applications for basement conversions in the most demanding boroughs such as Westminster and Kensington & Chelsea,' says Rosie.

Provided the house is suitable, clients and designers wanting to create basement media rooms are now limited only by their imagination. 'As it's a totally new floor the room can be as big as you want it to be, and size, shape and soundproofing can be designed to suit your requirements,' says Rosie. 'It's a chance to experiment with different architectural and design ideas too, as the basement floor plans rarely resemble the typical traditional houses they are built under.'

The Oxford and London Building Company – www.olbc.co.uk
Basement Works – www.basementworks.co.uk
Lawson Robb – www.lawsonrobb.com

Posted by [Jamie Mitchell](#)
July 2nd, 2013 | [Leave a comment](#)
Posted in: [Audio Visual](#), [Inspiration](#), [Interior Design](#), [Luxury Interiors](#)
Tagged with: [basement conversion](#), [Basement Extension](#), [Basement Media Rooms](#), [Basement Works](#), [cinema room](#), [extension ideas](#), [Home Cinemas](#), [Media Room](#), [Rosie Caley](#), [The Oxford and London Building Company](#)

G+1 19

Pin it 1K+



written about art, design & architecture for Blueprint

JUSTYNA SOWA
Justyna is a digital PR and social media expert fully immersed in the design and interiors industries.

FOLLOW US



FEATURED POSTS



A Truly Bespoke Home in Highgate



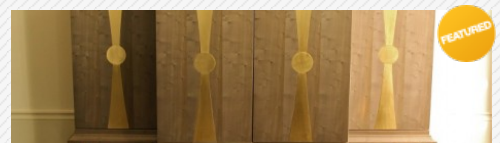
Into The Light



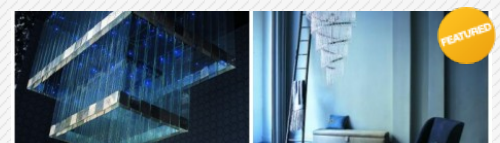
The Sofa & Chair Company Buttons Up For 2014



Hartmann Designs, London Duplex Penthouse



Made to Measure



Ochre Discreet Glamour and Calm Craftmanship

enterprise
CarShare

GO WHERE YOU WANT,
When You Want.

FIND
LOCATIONS

Write a Comment

Your email address will not be published. Required fields are marked *

COMMENT

Comment moderation may be in use.
Please do not submit your comment twice – it will appear shortly.

NAME *

EMAIL *

WEBSITE

POST COMMENT

ARCHIVES



Getting The Most Out of Loft...

MORE »



Contemporary Entertaining w...

MORE »



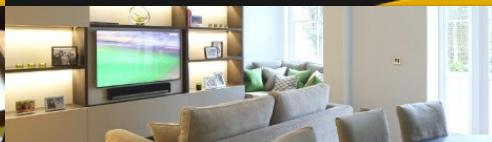
A Luxury House on a Private S..

MORE »



Tim Gosling: Bespoke Furnitu...

MORE »



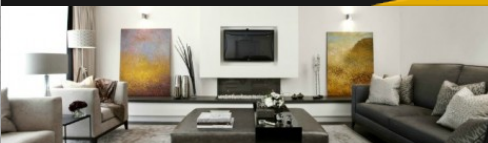
A Regent's Park Townhouse w...

MORE »



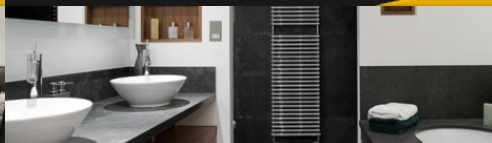
A London Penthouse with Pan..

MORE »



A 1920s Cottage in Chigwell, ...

MORE »



Natural Stone for Beautiful Ba..

MORE »



What to see at May Design Se..

MORE »

THE ART OF BESPOKE

Inspiration
Homes Showcase
Interior Design
Kitchens
Bathrooms
Home Products
Luxury Interiors
We Are Bespoke
Events

SOURCEBOOK

Sourcebook
Interior Designers
Kitchens
Bathrooms
Design and Build
Gardens
Home Products

COMPANY INFO

About Us
Advertise
Contact Us
Find Interior Designers
Privacy Policy
Terms & Conditions

THE
ART OF BESPOKE



© 2016 The Art of Bespoke. All Rights Reserved.